



# **St Bernards in Bloom**

# **Open Gardens**

**Sunday 28th June 2026**

**Children's Quiz**  
**Live Music**



# Welcome

## St Bernards Road Open Gardens 2026

We are delighted to welcome you to St Bernards Road Open Gardens 2026. This year there are twelve interesting and contrasting gardens along St Bernards Road open for you to enjoy.

Last year's event was our busiest yet, with over 1,000 visitors helping us raise £12,500 for the Stroke Association. Thank you to everyone who supported us. This year, two thirds of the money raised will go to the Stroke Association with one third going to the Mayor of Solihull's local charities.

A big thank you goes to our brochure advertisers, our garden owners, and the local residents who provide homemade cakes in the tea gardens and have offered help in so many ways. Open Gardens is a real community effort, and it would not happen without the enthusiastic support of the whole road.

We are pleased again to welcome musicians and singers to No 94. We are also excited to welcome The Royal Birmingham Conservatoire, who are performing in the tea gardens at No 49 for the first time.

Finally, we are always interested in welcoming new gardens, so if you live in the road, do contact us so we can learn and enjoy even more about the varied gardens of St Bernards Road in 2027.

Organising Committee, Open Gardens 2026

[www.stbernardsopengardens.co.uk](http://www.stbernardsopengardens.co.uk)

*St Bernards Road was developed from 1865 on the ridge above Olton Mere. Many of the gardens retain elements of their original Victorian design.*



PEOPLE | PROPERTY | PASSION

**DM&CO.**

*Solihull's Favourite Agent*

8 The Pavillions, Cranmore Drive, Shirley, Solihull, West Midlands, B90 4SB  
Tel: 0121 775 0101 | [sales@dmandcohomes.co.uk](mailto:sales@dmandcohomes.co.uk) | [www.dmandcohomes.co.uk](http://www.dmandcohomes.co.uk)

# Our Charities

## Stroke Association

Every day in the UK, 240 people wake up to the life-changing impact of stroke. Mums, dads, grandparents, young people and even children can be left unable to move, see, speak or even swallow. It's a traumatic, life-changing event that robs survivors and their families of the life they knew. The Stroke Association is the only charity in the UK providing lifelong support for all stroke survivors and their families.

Our work is only possible because of the ongoing support we receive from our supporters, such as the amazing volunteers and organisers from St Bernards Road Open Gardens, who have been coming together for the past 13 years and raising money to help us.

Thank you,

Stroke Association



## Mayor of Solihull Charities

Alongside our support for the Stroke Association, we are pleased this year to also give our support to the local charities chosen by the Mayor of Solihull.

Open Gardens is delighted that one third of the money raised this year will go towards helping these charities that make a difference across Solihull borough and the local community.

Thank you for your support.

## Joining Open Gardens 2027

- We are looking for new gardens.
- Interesting but not immaculate!

Email: [emma.simpson21@btinternet.com](mailto:emma.simpson21@btinternet.com)

[www.stbernardsopengardens.co.uk](http://www.stbernardsopengardens.co.uk)

## Thanks to...

- The Committee & gardeners
- Our advertisers
- Helpers & musicians on the day
- St Bernards Care Home
- Everyone who came

# Open Gardens 2026

The gardens are listed from the Warwick Road end, but you can start anywhere along St Bernards Road.

A map in the centre pages shows the location of each garden, along with refreshments, music, plant sales and toilet facilities.

There is a children's quiz on pages 30–31. Keep a lookout for clues as you explore.

We aim to make the gardens as accessible as possible. Due to the sloping nature of St Bernards Road, some gardens are not wheelchair friendly and this is noted in each entry.

## St Margaret's Church

### Warwick Road

Enjoy our beautiful gardens and note the restored bird bath which belonged to Edith Holden, who was the author of *The Country Diary of an Edwardian Lady* and lived in Kineton Green Road. You are welcome to come inside through the big blue doors and enjoy the very beautiful interior.



# Oak Mount

## 14 St Bernards Road

Named Oak Mount in 1894 for good reason. This family garden runs down to Olton Mere Drive and includes a grand copper beech and centrepiece oak tree. A beehive, raised beds, a replanted orchard, greenhouses and two loyal hens that provide egg self-sufficiency complete the vista.



# Doehurst

## 26 St Bernards Road

A long and interesting garden leading to a croquet lawn and then down to Olton Mere.

**Details:** Toilet available.



Wishing success to all the Open Gardens



Broadcast & Television Services

[katie@primeticketuk.com](mailto:katie@primeticketuk.com)

## 4 Hawkeswell Close, Austin Cars

**off St Bernards Road**

There is a collection of Austin cars on the drive.

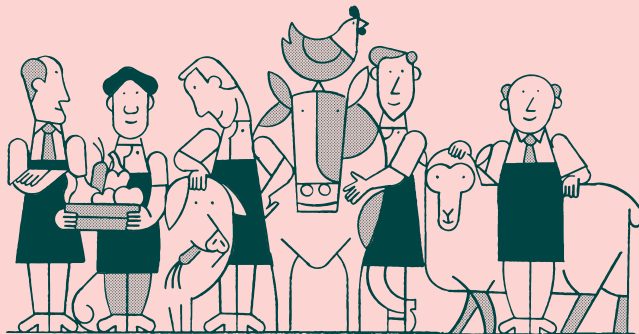
There is also an information board about Frederick Lanchester, the famous car maker and inventor, who trialed model planes from the upper windows of No 25 St Bernards Road.





## 120 Years of Tradition and Expertise

Craft Butchery • Handmade Pies • Deli • Hot Foods



**BENTLEY HEATH**

**KNOWLE**

**BALSALL COMMON**

Head to [ericlyons.co.uk](http://ericlyons.co.uk) and use code #GARDENPIE for a FREE Family Chicken Pie. Offer valid until 12/07/26.

## 4 Hawkeswell Close

### off St Bernards Road

Pretty top garden and terrace featuring plants, troughs and a water feature. An elegant archway leads to two large lawns bordered by flowers and trees, overlooked by a thatched teak hut. Walking down the path leads to fruit trees, vegetables and the greenhouse. Another arch leads to a pond, waterfall and sitting area.



# The Ferns

## 44 St Bernards Road

Family garden with an area given over to vegetables, acers, heucheras and hostas being the predominant plants, despite the house being named "The Ferns"! The design is heavily influenced by a large friendly Labrador.



Stuart & Roseblade  
INTERIORS

James 07595 901019 Stephanie 07825 077755  
@stuartandrosebladeinteriors



# Stratford House

## 49 St Bernards Road

Hilary and Chris are better at hosting parties than tending plants, so are very pleased to welcome you for tea and cakes. For those interested in history, there is a picture board about the house; and there is a climbing frame for the brave and the young at heart. Royal Birmingham Conservatoire are performing in the tea garden.



**Details:** Tea garden, wheelchair access and toilet.



## PLATFORM THREE

Your local Wine Bar and  
Restaurant

Our cosy venue is the perfect place to meet family or friends. Whether you want a quick pint or a relaxed evening meal, pop in and say hi!

163-165 Warwick Road,  
Solihull, West Midlands, B92  
7AR

Phone: 07575 562766

Email: [platformthreerestaurant@gmail.com](mailto:platformthreerestaurant@gmail.com)

Parking available at the rear  
of eatery on Station Drive

# edwards

Plumbing & Heating Supplies ~ means "edwards"

2-8 Warwick Road,  
Olton, Solihull, B92 7HX



**Call today: 0121 764 4626**

Visit us online at [www.edwards.uk.com](http://www.edwards.uk.com)  
Email: [showroom@edwards.uk.com](mailto:showroom@edwards.uk.com)



**HOURS: Monday-Friday 8am-5pm | Saturday 8am - 1pm**

# Olton Crest

## 53 St Bernards Road

A well-established Victorian garden with interesting planting. Divided into three sections. The main area is laid in a traditional style with plenty of space for family activities. The central area has a raised pond and leads to the hidden garden.

**Details:** Only one wheelchair at a time due to narrow access.



## Belmont, 55 St Bernards Road

### Plant Sales | Access via No 53

This garden is a bit of a mixture. There is a formal area of pond and a vintage summerhouse, softened by curved borders filled with shrubs and a bit of ‘over-planting’.

Towards the bottom of the garden are apple, crab apple and quince trees. Our granddaughter enjoys dancing round the dwarf mulberry, singing the nursery rhyme! See if you can spot the grapevine growing up the ash tree.

**Details:** Limited wheelchair access.



# **TOPLINE SYSTEMS**

IT Services and Support

Over 30 years' experience providing high quality IT Services to businesses, charities, education & private individuals.



- IT Systems
- Network installation & fault finding
- WiFi coverage and stability issues
- Public and private cloud services
- Website hosting, maintenance, domain registration
- Latest fibre optic internet services & digital telecoms
- Support contracts for small businesses



Home & business  
customers welcome  
Local engineers



**Tel: 0121 778 2270**

[www.topline.co.uk](http://www.topline.co.uk)

# St Bernards Care Home

## 76 St Bernards Road

A delightful garden laid out with a winding path suitable for wheelchairs. Plenty of seating and a summer house. Enjoy tea and cakes made by our resident pastry chef.

**Details:** Easy wheelchair access.



## 83 St Bernards Road

Very attractive and colourful front garden leading to a formal rear garden with a large lawn. It is known as the hanging basket garden. As well as an abundance of beautiful baskets there are hundreds of plants in borders and pots, all lovingly grown in the greenhouse by a knowledgeable and enthusiastic gardener.

**Details:** Wheelchair access possible but care needed to manoeuvre over the gravel drive and low ridge.







With GreenThumb

# The party's always outside.

When lawn care and hard surface cleaning are done by GreenThumb, then being outside is just time for you and yours.

Life's always greener with GreenThumb.

Join us online at [GreenThumb.co.uk](https://www.greenthumb.co.uk)



Book your  
service online.



Solihull branch  
Call 0121 705 6395  
Email [solihull@greenthumb.co.uk](mailto:solihull@greenthumb.co.uk)

**GreenThumb**  
PART OF KEYTO GROUP

## 94 St Bernards Road

A variety of live music all afternoon. Pimm's and samosas. Access from the end of the garden at No 96.

**Details:** Front gate entrance for wheelchairs only.



## 96 St Bernards Road

We have created an attractive garden with a series of 'rooms' flowing into each other. There is an ornamental fish pond with a raised seating area and a wildlife pond as our fish and frogs do not work well together. Plenty of interesting planting, including a large vegetable garden.

**Details:** Entrance too narrow for wheelchairs so ask for access via No 94.



A close-up photograph of a woman with long, light brown hair playing a silver flute. She is looking slightly to the right with a focused expression. The background is dark and out of focus. There are red rectangular graphic elements in the top-left, middle-left, and middle-right corners of the image.

# Book a Musician

RBC can proudly supply highly-trained individuals from solo harpists and classical pianists, to jazz duos and trios, and wind and brass quintets for wedding ceremonies, drinks receptions, corporate events and more.

Contact  
[professionalengagements@bcu.ac.uk](mailto:professionalengagements@bcu.ac.uk)  
/ 0121 331 6902 for more information.

# Olton Friary Grounds

## Car parking

Olton Friary, which is an integral part of the local community, opened in 1873. The church and bell tower, which dominates the local skyline, were built in 1929. The grounds are tended by a team of volunteers.

**Details:** Wheelchairs should keep to the paths due to uneven lawn areas.



# Olton Mere Sailing Club

Established in 1899 by St Bernards Road residents, Olton Mere Sailing Club thrives as an RYA-affiliated hub for sailing, training and walking access.

Olton Mere is Solihull's largest water body and a haven for diverse wildlife. Its lakeside path is a tranquil space for nature walks. Walking access permits are available to everyone. Discover more at:



[www.oltonmere.org.uk](http://www.oltonmere.org.uk)

# SHABABS

## Home of the Birmingham Balti

The Birmingham  
Balti has applied  
for Unesco World  
Heritage Status  
to protect the Balti.



unesco



Head Chef - Zaf

163-165 Ladypool Rd  
Balti Triangle, B12 8LQ  
(10 min from City Centre)

**0121 440 2893**

shababs.co.uk

AS SEEN ON



**OPEN  
DAILY**

12 NOON  
TIL LATE

Support your  
Balti Triangle!



# MVKELLY

## CIVIL ENGINEERING

Shaping the Future, One Project at a Time.

### Contact Us



<https://www.mvkelly.co.uk/>



[enquiries@mvkelly.co.uk](mailto:enquiries@mvkelly.co.uk)



0121 708 5000



## WHAT

### WE DO

**Groundworks & Infrastructure** – Comprehensive groundwork services, from initial earthworks to final surfacing.

**Highways & Roads** – Efficient, high-standard road construction and improvements.

**Drainage Solutions** – Sustainable and effective drainage systems for long-term durability.

**Value Engineering** – Optimising construction whilst reducing costs without compromising quality.

## ABOUT

### OUR COMPANY

MV Kelly is a leading civil engineering and groundworks contractor, committed to delivering high-quality infrastructure solutions across the UK. With 30 years of experience, we partner with major developers to bring residential and commercial projects to life.

# Music at Number 94

## U3A Big Band

Composed of U3A musicians from across the Midlands. We rehearse fortnightly in Balsall Common and perform at U3A meetings and charity events in the local area. If interested in joining us to play, or engaging us for an event, please get in touch.

Contact: [bigband@balsallcommonu3a.org](mailto:bigband@balsallcommonu3a.org)

## 8 Before Ava

A contemporary blues band from Birmingham, we are no strangers to live performance and hard work. All four of us have toured internationally as professional ballet dancers. We started to write our own material backstage in theatre and opera house dressing rooms across the world. We have now moved to playing at clubs and live music venues across the Midlands.

Contact: Instagram: [@8beforeava](https://www.instagram.com/@8beforeava) Tel: 07852 177237



## **Sound of Steel Steelband**

**Our family-run business is led by Jason Tweed. Jason learnt his trade by performing in gig-sized bands with his father, who hails from the Caribbean island of St Kitts & Nevis, together with players originating from the Caribbean. This provides a good grounding in all of the popular songs performed on the steel pans. Jason has performed on Caribbean and Mediterranean cruises, and in Dubai, Oman, Kuwait, and the length and breadth of the United Kingdom.**

**Contact: [Jason.tweed@soundofsteel.com](mailto:Jason.tweed@soundofsteel.com)**

**[www.soundofsteel.com](http://www.soundofsteel.com) | Mobile: 07725 651789**

## **Bentley Whalers**

**Our shanty group is part of Sing Bentley Heath Community Choir, which raises funds to support many local charities. This year we are supporting Molly Ollys and the Huntington's Disease Association.**

**Contact: [www.singbentleyheath.org.uk](http://www.singbentleyheath.org.uk)**



# ARDEN GATE AUTOMATION



ARE WORKING WITH  
**ST BERNARDS IN BLOOM**  
to make Sunday 28th June an  
ENJOYABLE DAY FOR ALL!

---

01564 731 035

[WWW.ARDENGATEAUTOMATION.CO.UK](http://WWW.ARDENGATEAUTOMATION.CO.UK)

TOUCHWOOD

EXPLORE

MORE

*at  
Touchwood*

With over 70 stores, 25 bars and restaurants, a cinema and entertainment venues, there is so much more to explore and enjoy at Touchwood Solihull.

CONNECT WITH US

[TOUCHWOODSOLIHULL.CO.UK](https://www.touchwoodsoli hull.co.uk)



Rajnagar

# RAJNAGAR SPECIALS

G R E A T F O O D . M E M O R A B L E M O M E N T S .

RAJNAGAR HAS SERVED THE WEST MIDLANDS FOR NEARLY 40 YEARS

With a strong reputation for quality and hospitality.

Known for its award-winning service, the restaurant has welcomed generations of guests and remains a trusted name in Bangladeshi and Indian dining.



## DINER'S BANQUET

£15.95 PER HEAD

£9.95 CHILDREN UNDER 12

AVAILABLE  
SUNDAY – WEDNESDAY  
(EXCLUDING BANK HOLIDAYS & SPECIAL CALENDAR DAYS)

Starter  
Main Course  
Accompaniment  
Dessert or Tea/Coffee

T&C Apply  
£0.95 surcharge applies to upgraded dishes

★ BOOKING RECOMMENDED

ALLERGY NOTICE: PLEASE REFER TO OUR MAIN MENU OR ASK A MEMBER OF STAFF.



## TAKEAWAY OFFERS

# 15% OFF

ON TELEPHONE COLLECTION ORDERS

SPEND  
£22



RECEIVE A  
COMPLIMENTARY  
STARTER

SPEND  
£60



RECEIVE A  
COMPLIMENTARY BOTTLE  
OF HOUSE WINE  
(Red or White – Usually £16.95)

T&C Apply

### PLEASE NOTE:

OFFERS CANNOT BE USED IN CONJUNCTION WITH ONE ANOTHER.  
DISCOUNT AVAILABLE FOR A LIMITED TIME ONLY.



www.rajnagar.com



0121 742 8140 / 0121 742 4842



256 Lyndon Road, Olton,  
Solihull, West Midlands  
B92 7QW



Scan to  
VISIT OUR  
WEBSITE





# St Bernards

CARE HOME

More than a care home — a true home. St Bernard's, where every life is celebrated.



Proudly supporting St Bernard's in Bloom — celebrating community, gardens, and shared moments.

0121 708 0177



## DEMENTIA CARE

- Specialist support tailored for memory care
- Dignity-led, safe and stimulating environment

## RESIDENTIAL CARE

- A true home from home with full support
- Focus on independence, well-being and community

Visit Us At

76 St Bernards Road,  
Solihull, Olton,  
B92 7BP

# Children's Garden Quiz

**No 14**

How many tomato plants are growing in the bottom greenhouse?

**No 26**

What can you see which makes a noise and begins with the letter B? It is not alive.

**4 Hawkeswell Close**

The pond at the end of the garden attracts many frogs. What is the main reason that gardeners encourage frogs into their gardens?

**No 44**

How do you know that a dog lives in this house?

## No 53

Where do the birds post their eggs in this garden?

## No 55

Where can you find a robin and a bluebird which will not fly away?

## No 76

Look for the stone creatures in this garden and name 3.

## No 83

Two soft toys are sitting at a table at the bottom of the garden. One is a Praying Mantis, what is the other one?

## No 96

Look in the front and back gardens. How many hanging baskets can you see?

Take your completed entry to No 96 or No 14 to collect a prize!



**HCD**  
**DEVELOPMENTS**

*are proud to support*

**St Bernard's Annual Garden Show**



[hcddevelopments.co.uk](http://hcddevelopments.co.uk)

  [hcddevelopments](https://www.instagram.com/hcddevelopments)

 0121 250 2050



**LAND WANTED** SPEAK TO  
US TODAY